

YTE Mechanical Suspension Spare Parts Listing

For Your Trailer Axle Suspension Needs Call York :

Head Office

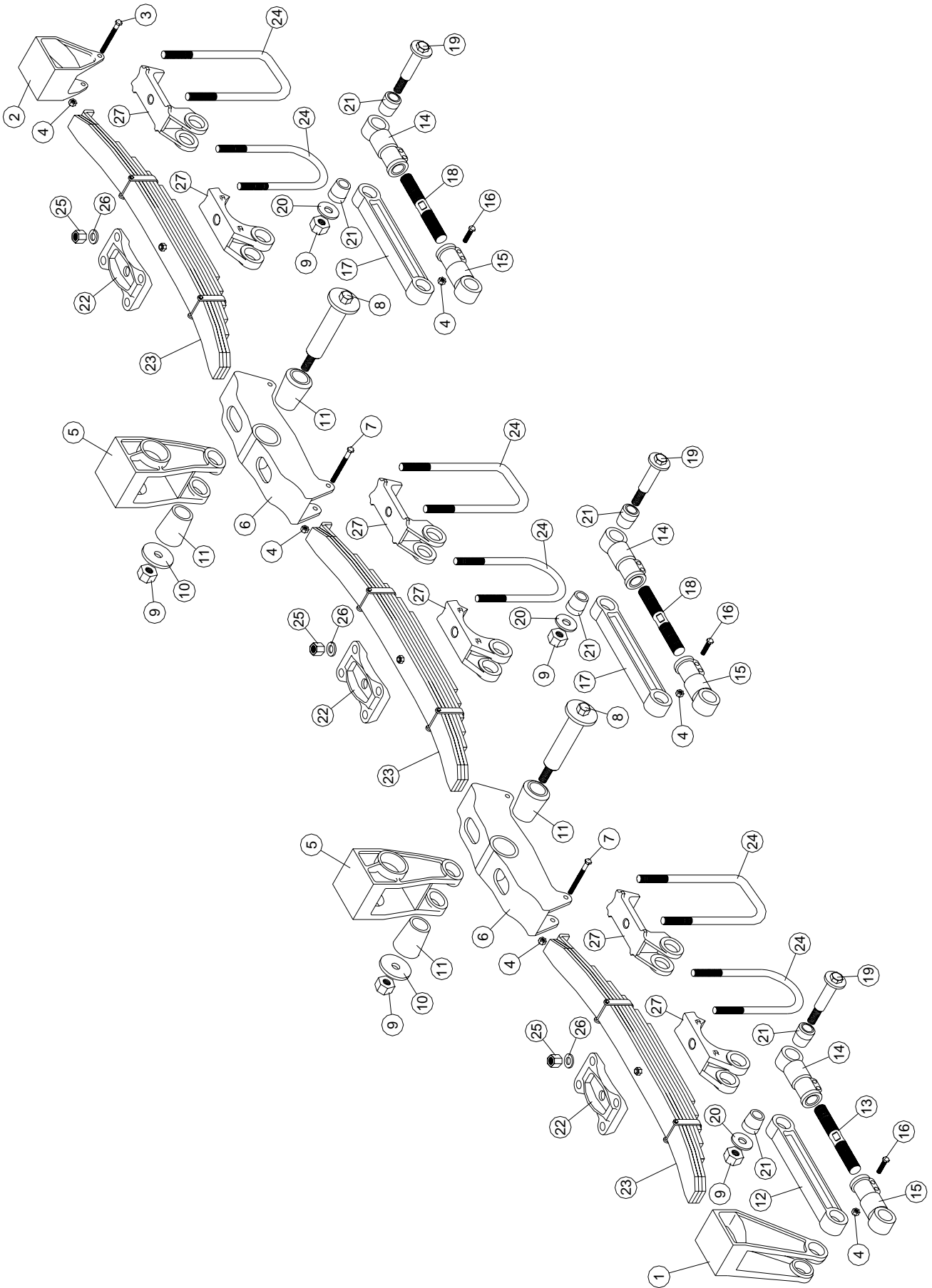
Singapore

York Transport Equipment (Asia) Pte. Ltd.
No. 5 Tuas Avenue 6, Singapore 639295
Email : enquiry@yorktpt.com.sg
Tel : (65) 6861 0577 Fax : (65) 6861 4045

YTESuspSpares.RevD.Mar2008

Distributors

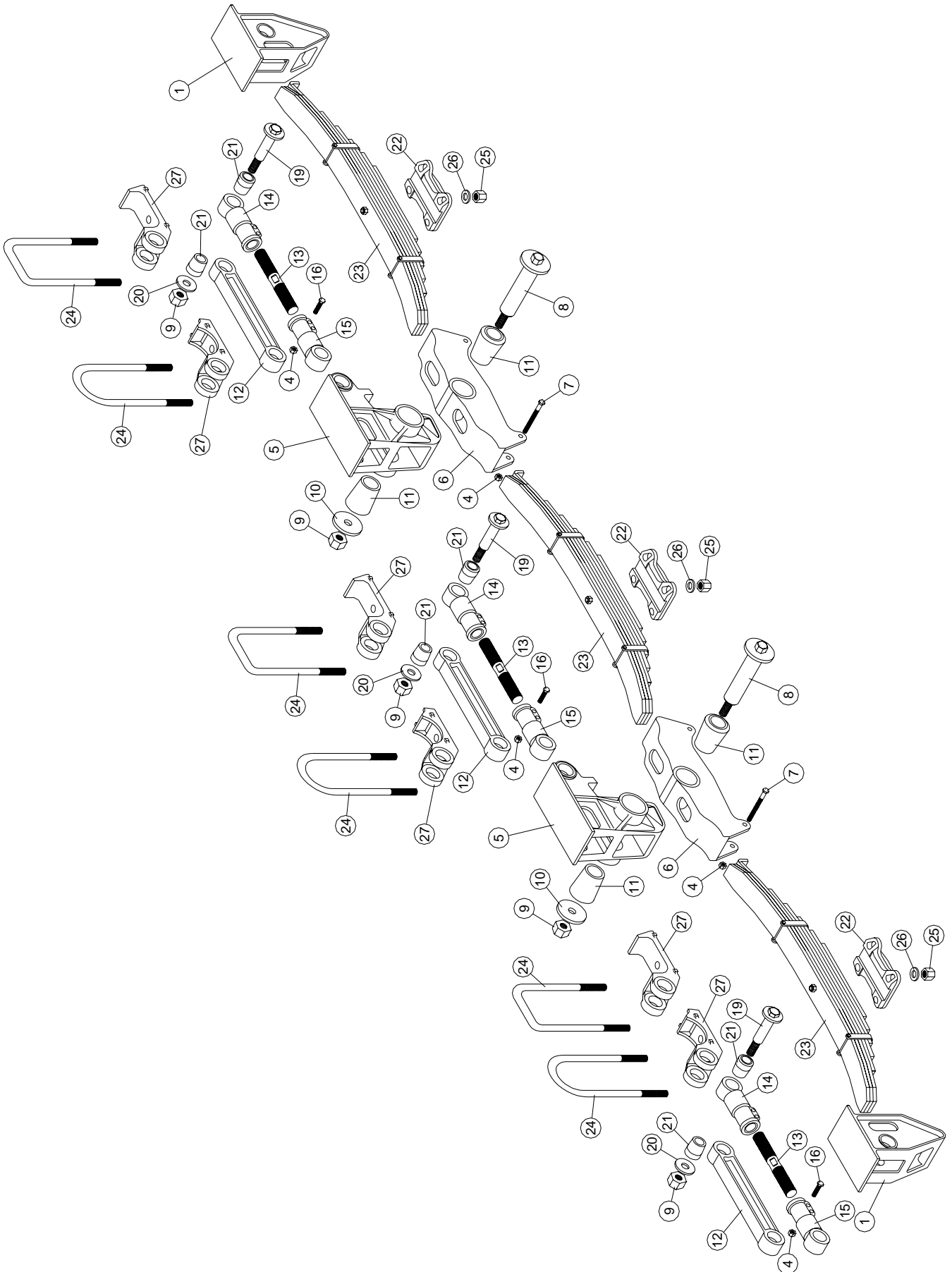
| <u>Content</u> | <u>Page</u> |
|---|--------------------|
| YTE Suspension Spare Parts Listing | 2 - 17 |
| a. YTE 75 Mechanical Suspension | |
| i) Overslung (Round & Square Axles) | 2 - 3 |
| ii) Underslung (Round & Square Axles) | 4 - 7 |
| b. YTE 75/90 Mechanical Suspension | |
| i) Overslung (Round & Square Axles) | 8 - 9 |
| ii) Underslung (Round & Square Axles) | 10 - 11 |
| c. YTE 90 Mechanical Suspension | |
| i) Overslung (Round & Square Axles) | 12 - 15 |
| ii) Underslung (Round & Square Axles) | 16 - 17 |



| Item | Description | 5" Round Axle Beam | | | | | | 6" Square Axle Beam | | | | | |
|------|---|--------------------|--------------|--------|--------------|----------|--------------|---------------------|--------------|--------|--------------|----------|--------------|
| | | Single | | Tandem | | Tri-Axle | | Single | | Tandem | | Tri-Axle | |
| | | Qty. | Part No. | Qty. | Part No. | Qty. | Part No. | Qty. | Part No. | Qty. | Part No. | Qty. | Part No. |
| 1 | Front Hanger | 2 | 900201 | 2 | 900201 | 2 | 900201 | 2 | 900201 | 2 | 900201 | 2 | 900201 |
| 2 | Rear Hanger | 2 | 900203 | 2 | 900203 | 2 | 900203 | 2 | 900203 | 2 | 900203 | 2 | 900203 |
| 3 | M12 x 1.75 x 120 Ht. Hex Bolt | 2 | HB12/175/120 | 2 | HB12/175/120 | 2 | HB12/175/120 | 2 | HB12/175/120 | 2 | HB12/175/120 | 2 | HB12/175/120 |
| 4 | M12 x 1.75 Nylon Locknut | 6 | LN12/175 | 14 | LN12/175 | 22 | LN12/175 | 6 | LN12/175 | 14 | LN12/175 | 22 | LN12/175 |
| 5 | Equalizer Hanger - 1230mm, 1315mm, 1360mm (1) | 2 | 900202 | 2 | 900202 | 4 | 900202 | 2 | 900202 | 2 | 900202 | 4 | 900202 |
| 5 | Equalizer Hanger - 1540mm (1) | 2 | 900204 | 2 | 900204 | 4 | 900204 | 2 | 900204 | 2 | 900204 | 4 | 900204 |
| 6 | Equalizer - 1230mm (1) | 2 | 900007 | 2 | 900007 | 4 | 900007 | 2 | 900007 | 2 | 900007 | 4 | 900007 |
| 6 | Equalizer - 1315mm, 1360mm (1) | 2 | 900206 | 2 | 900206 | 4 | 900206 | 2 | 900206 | 2 | 900206 | 4 | 900206 |
| 6 | Equalizer - 1540mm (1) | 2 | 900010 | 2 | 900010 | 4 | 900010 | 2 | 900010 | 2 | 900010 | 4 | 900010 |
| 7 | M12 x 1.75 x 130 Ht. Hex Bolt | 4 | HB12/175/130 | 4 | HB12/175/130 | 8 | HB12/175/130 | 4 | HB12/175/130 | 4 | HB12/175/130 | 8 | HB12/175/130 |
| 8 | Equalizer Shaft | 2 | 900018 | 2 | 900018 | 4 | 900018 | 2 | 900018 | 2 | 900018 | 4 | 900018 |
| 9 | M24 x 3.0 Nylon Locknut | 10 | LN24/300 | 10 | LN24/300 | 16 | LN24/300 | 10 | LN24/300 | 10 | LN24/300 | 16 | LN24/300 |
| 10 | Equalizer Washer | 2 | 901009 | 2 | 901009 | 4 | 901009 | 2 | 901009 | 2 | 901009 | 4 | 901009 |
| 11 | Equalizer Bush | 4 | 901020 | 4 | 901020 | 8 | 901020 | 4 | 901020 | 4 | 901020 | 8 | 901020 |
| 11 | Equalizer Bush (Poly) | 4 | 901020P | 4 | 901020P | 8 | 901020P | 4 | 901020P | 4 | 901020P | 8 | 901020P |
| 12 | Fixed Torque Arm | | | | | | | | | | | | |
| 12 | Fixed Torque Arm | 1 | 901100/395 | 1 | 901100/395 | 1 | 901100/395 | 1 | 901100/395 | 1 | 901100/395 | 1 | 901100/395 |
| 13 | Adjustable Torque Arm Screw (260mm) | 1 | 900033/01 | 1 | 900033/01 | 1 | 900033/01 | 1 | 900033/01 | 1 | 900033/01 | 1 | 900033/01 |
| 14 | Adjustable Torque Arm End R/H | 1 | 900024R | 2 | 900024R | 3 | 900024R | 1 | 900024R | 2 | 900024R | 3 | 900024R |
| 15 | Adjustable Torque Arm End L/H | 1 | 900024L | 2 | 900024L | 3 | 900024L | 1 | 900024L | 2 | 900024L | 3 | 900024L |
| 16 | M12 x 1.75 x 50 Ht. Hex Bolt | 4 | HB12/175/050 | 8 | HB12/175/050 | 12 | HB12/175/050 | 4 | HB12/175/050 | 8 | HB12/175/050 | 12 | HB12/175/050 |
| 17 | Fixed Torque Arm - 1230mm (1) | 1 | 901100/495 | 1 | 901100/495 | 2 | 901100/495 | 1 | 901100/495 | 1 | 901100/495 | 2 | 901100/495 |
| 17 | Fixed Torque Arm - 1315mm (1) | 1 | 901100/525 | 1 | 901100/525 | 2 | 901100/525 | 1 | 901100/525 | 1 | 901100/525 | 2 | 901100/525 |
| 17 | Fixed Torque Arm - 1360mm (1) | 1 | 901100/550 | 1 | 901100/550 | 2 | 901100/550 | 1 | 901100/550 | 1 | 901100/550 | 2 | 901100/550 |
| 17 | Fixed Torque Arm - 1540mm (1) | 1 | 901100/470 | 1 | 901100/470 | 2 | 901100/470 | 1 | 901100/470 | 1 | 901100/470 | 2 | 901100/470 |
| 18 | Adjustable Torque Arm Screw (350mm) | 1 | 900033/02 | 1 | 900033/02 | 2 | 900033/02 | 1 | 900033/02 | 1 | 900033/02 | 2 | 900033/02 |
| 18 | Adjustable Torque Arm Screw (420mm) | 1 | 900033/03 | 1 | 900033/03 | 2 | 900033/03 | 1 | 900033/03 | 1 | 900033/03 | 2 | 900033/03 |
| 19 | Torque Arm Pin | 4 | 930017 | 8 | 930017 | 12 | 930017 | 4 | 930017 | 8 | 930017 | 12 | 930017 |
| 20 | Torque Arm Washer | 4 | 901010 | 8 | 901010 | 12 | 901010 | 4 | 901010 | 8 | 901010 | 12 | 901010 |
| 21 | Torque Arm Bush | 8 | 770701 | 16 | 770701 | 24 | 770701 | 8 | 770701 | 16 | 770701 | 24 | 770701 |
| 22 | Spring Clamp Plate | 2 | 900003 | 4 | 900003 | 6 | 900003 | 2 | 900009 | 4 | 900009 | 6 | 900009 |
| 23 | 8 Leaf Spring | 2 | 770706 | 4 | 770706 | 6 | 770706 | 2 | 770706 | 4 | 770706 | 6 | 770706 |
| 24 | M22 x 2.0 U-Bolt (2) | 4 | 770721 | 8 | 770721 | 12 | 770721 | 4 | 773015 | 8 | 773015 | 12 | 773015 |
| 25 | M22 x 2.0 Nut | 8 | 770723 | 16 | 770723 | 24 | 770723 | 8 | 770723 | 16 | 770723 | 24 | 770723 |
| 26 | M22 Washer | 8 | 770724 | 16 | 770724 | 24 | 770724 | 8 | 770724 | 16 | 770724 | 24 | 770724 |
| 27 | Spring Seat - UL (Ultra Low - 20mm) | 2 | 900027 | 4 | 900027 | 6 | 900027 | 2 | 900008 | 4 | 900008 | 6 | 900008 |
| 27 | Spring Seat - L (Low - 50mm) | 2 | 900017 | 4 | 900017 | 6 | 900017 | 2 | 900028 | 4 | 900028 | 6 | 900028 |
| 27 | Spring Seat - M (Medium - 75mm) | 2 | 900025 | 4 | 900025 | 6 | 900025 | 2 | 900073 | 4 | 900073 | 6 | 900073 |
| 27 | Spring Seat - H (High - 100mm) | 2 | 900015 | 4 | 900015 | 6 | 900015 | 2 | 900074 | 4 | 900074 | 6 | 900074 |

YTE75 Overslung - Rev.B(04.05.06)

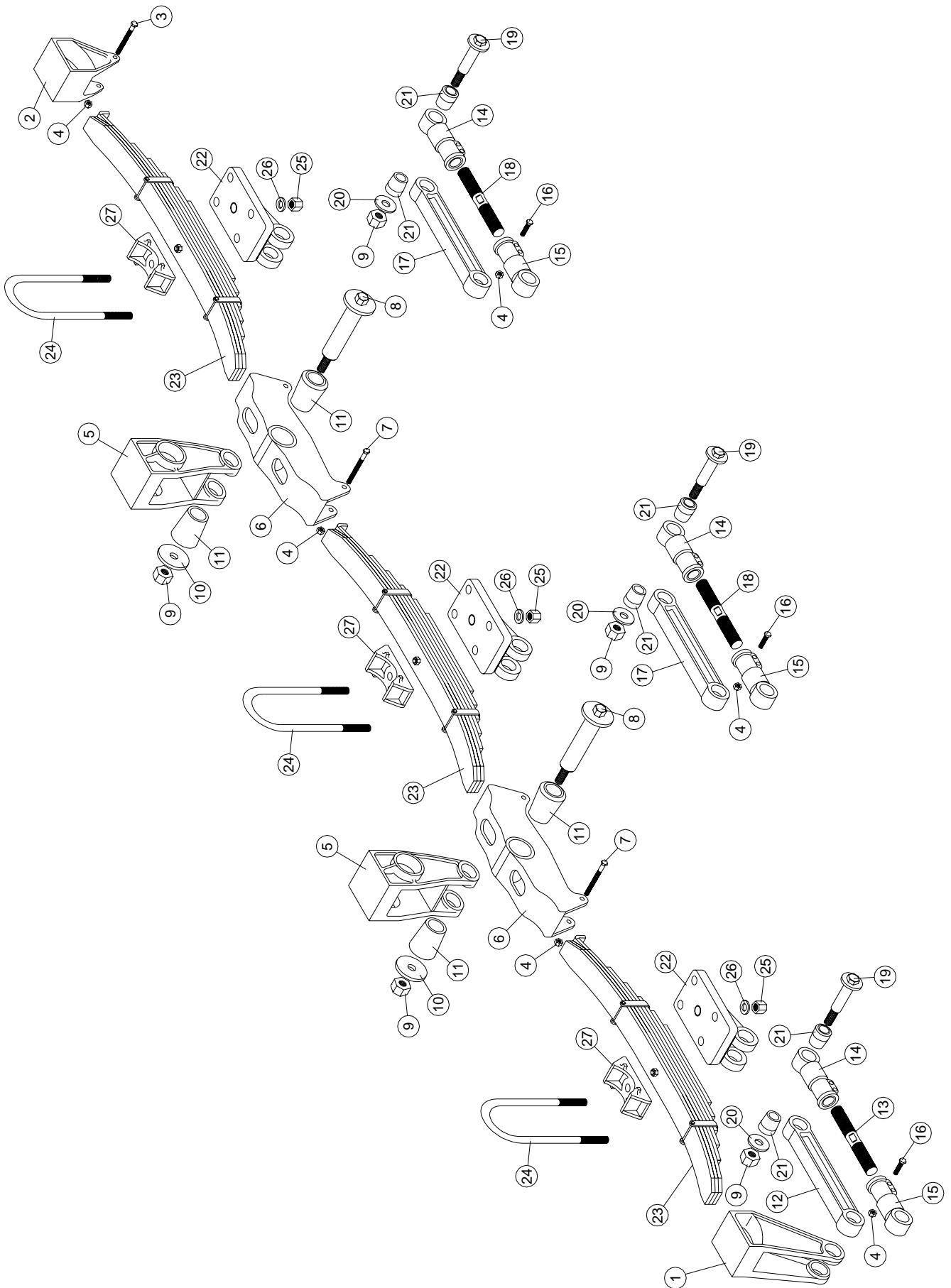
Note 1: Axle Spacing
 Note 2: Specify U-Bolt length for actual spare part replacement.



| Item | Description | 5" Round Axle Beam | | | | | | 6" Square Axle Beam | | | | | |
|------|---------------------------------------|--------------------|--------------|--------|--------------|----------|--------------|---------------------|--------------|--------|--------------|----------|--------------|
| | | Single | | Tandem | | Tri-Axle | | Single | | Tandem | | Tri-Axle | |
| | | Qty. | Part No. | Qty. | Part No. | Qty. | Part No. | Qty. | Part No. | Qty. | Part No. | Qty. | Part No. |
| 1 | Front/Rear Hanger | 4 | 900037 | 4 | 900037 | 4 | 900037 | 4 | 900037 | 4 | 900037 | 4 | 900037 |
| 3 | M12 x 1.75 x 120 Ht. Hex Bolt | 2 | HB12/175/120 | 2 | HB12/175/120 | 2 | HB12/175/120 | 2 | HB12/175/120 | 2 | HB12/175/120 | 2 | HB12/175/120 |
| 4 | M12 x 1.75 Nylon Locknut | 6 | LN12/175 | 14 | LN12/175 | 22 | LN12/175 | 22 | LN12/175 | 12 | LN12/175 | 20 | LN12/175 |
| 5 | Equalizer Hanger - 1230mm, 1315mm (1) | 2 | 900036 | 2 | 900036 | 4 | 900036 | 4 | 900036 | 2 | 900036 | 4 | 900036 |
| 5 | Equalizer Hanger - 1360mm, 1540mm (1) | 2 | 900089 | 2 | 900089 | 4 | 900089 | 4 | 900089 | 2 | 900089 | 4 | 900089 |
| 6 | Equalizer - 1230mm (1) | 2 | 900007 | 2 | 900007 | 4 | 900007 | 4 | 900007 | 2 | 900007 | 4 | 900007 |
| 6 | Equalizer - 1315mm, 1360mm (1) | 2 | 900206 | 2 | 900206 | 4 | 900206 | 4 | 900206 | 2 | 900206 | 4 | 900206 |
| 6 | Equalizer - 1540mm (1) | 2 | 900010 | 2 | 900010 | 4 | 900010 | 4 | 900010 | 2 | 900010 | 4 | 900010 |
| 7 | M12 x 1.75 x 130 Ht. Hex Bolt | 4 | HB12/175/130 | 4 | HB12/175/130 | 8 | HB12/175/130 | 8 | HB12/175/130 | 4 | HB12/175/130 | 8 | HB12/175/130 |
| 8 | Equalizer Shaft | 2 | 900018 | 2 | 900018 | 4 | 900018 | 4 | 900018 | 2 | 900018 | 4 | 900018 |
| 9 | M24 x 3.0 Nylon Locknut | 10 | LN24/300 | 10 | LN24/300 | 16 | LN24/300 | 16 | LN24/300 | 10 | LN24/300 | 16 | LN24/300 |
| 10 | Equalizer Washer | 2 | 901009 | 2 | 901009 | 4 | 901009 | 4 | 901009 | 2 | 901009 | 4 | 901009 |
| 11 | Equalizer Bush | 4 | 901020 | 4 | 901020 | 8 | 901020 | 8 | 901020 | 4 | 901020 | 8 | 901020 |
| 11 | Equalizer Bush (Poly) | 4 | 901020P | 4 | 901020P | 8 | 901020P | 8 | 901020P | 4 | 901020P | 8 | 901020P |
| 12 | Fixed Torque Arm | 1 | 901100/380 | 1 | 901100/380 | 1 | 901100/380 | 1 | 901100/380 | 1 | 901100/380 | 1 | 901100/380 |
| 13 | Adjustable Torque Arm Screw (260mm) | 1 | 900033/01 | 1 | 900033/01 | 1 | 900033/01 | 1 | 900033/01 | 1 | 900033/01 | 1 | 900033/01 |
| 14 | Adjustable Torque Arm End R/H | 1 | 900024R | 2 | 900024R | 3 | 900024R | 3 | 900024R | 2 | 900024R | 3 | 900024R |
| 15 | Adjustable Torque Arm End L/H | 1 | 900024L | 2 | 900024L | 3 | 900024L | 3 | 900024L | 2 | 900024L | 3 | 900024L |
| 16 | M12 x 1.75 x 50 Ht. Hex Bolt | 4 | HB12/175/050 | 8 | HB12/175/050 | 12 | HB12/175/050 | 12 | HB12/175/050 | 4 | HB12/175/050 | 12 | HB12/175/050 |
| 17 | Fixed Torque Arm - 1230mm, 1540mm (1) | 1 | 901100/470 | 1 | 901100/470 | 2 | 901100/470 | 2 | 901100/470 | 1 | 901100/470 | 2 | 901100/470 |
| 17 | Fixed Torque Arm - 1315mm (1) | 1 | 901100/525 | 1 | 901100/525 | 2 | 901100/525 | 2 | 901100/525 | 1 | 901100/525 | 2 | 901100/525 |
| 17 | Fixed Torque Arm - 1360mm (1) | 1 | 901100/380 | 1 | 901100/380 | 2 | 901100/380 | 2 | 901100/380 | 1 | 901100/380 | 2 | 901100/380 |
| 18 | Adjustable Torque Arm Screw (260mm) | 1 | 900033/01 | 1 | 900033/01 | 2 | 900033/01 | 2 | 900033/01 | 1 | 900033/01 | 2 | 900033/01 |
| 18 | Adjustable Torque Arm Screw (350mm) | 1 | 900033/02 | 1 | 900033/02 | 2 | 900033/02 | 2 | 900033/02 | 1 | 900033/02 | 2 | 900033/02 |
| 19 | Torque Arm Pin | 4 | 930017 | 8 | 930017 | 12 | 930017 | 12 | 930017 | 4 | 930017 | 12 | 930017 |
| 20 | Torque Arm Washer | 4 | 901010 | 8 | 901010 | 12 | 901010 | 12 | 901010 | 4 | 901010 | 12 | 901010 |
| 21 | Torque Arm Bush | 8 | 770701 | 16 | 770701 | 24 | 770701 | 24 | 770701 | 8 | 770701 | 24 | 770701 |
| 22 | Spring Clamp Plate - 8 Leaf Spring | 2 | 900003 | 4 | 900003 | 6 | 900003 | 6 | 900003 | 2 | 900003 | 6 | 900003 |
| 22 | Spring Clamp Plate - 10 Leaf Spring | 2 | 787697/01 | 4 | 787697/01 | 6 | 787697/01 | 6 | 787697/01 | 4 | 787697/01 | 6 | 787697/01 |
| 23 | 8 Leaf Spring | 2 | 770706 | 4 | 770706 | 6 | 770706 | 6 | 770706 | 2 | 770706 | 6 | 770706 |
| 23 | 10 Leaf Spring | 2 | 770710 | 4 | 770710 | 6 | 770710 | 6 | 770710 | 2 | 770710 | 6 | 770710 |
| 24 | M22 x 2.0 U-Bolt - 8 Leaf Spring (2) | 4 | 770721 | 8 | 770721 | 12 | 770721 | 12 | 770721 | 4 | 770721 | 12 | 770721 |
| 24 | M24 x 2.0 U-Bolt - 10 Leaf Spring (2) | 4 | 503281 | 8 | 503281 | 12 | 503281 | 12 | 503281 | 4 | 503281 | 12 | 503281 |
| 25 | M22 x 2.0 Nut | 8 | 770723 | 16 | 770723 | 24 | 770723 | 24 | 770723 | 8 | 770723 | 24 | 770723 |
| 25 | M24 x 2.0 Nut | 8 | 503288 | 16 | 503288 | 24 | 503288 | 24 | 503288 | 8 | 503288 | 24 | 503288 |
| 26 | M22 Washer | 8 | 770724 | 16 | 770724 | 24 | 770724 | 24 | 770724 | 8 | 770724 | 24 | 770724 |
| 26 | M24 Washer | 8 | 503289 | 16 | 503289 | 24 | 503289 | 24 | 503289 | 8 | 503289 | 24 | 503289 |
| 27 | Spring Seat | 2 | 900027 | 4 | 900027 | 6 | 900027 | 6 | 900027 | 2 | 900027 | 6 | 900027 |

YTE75 Underslung - Rev.B(04.05.06)

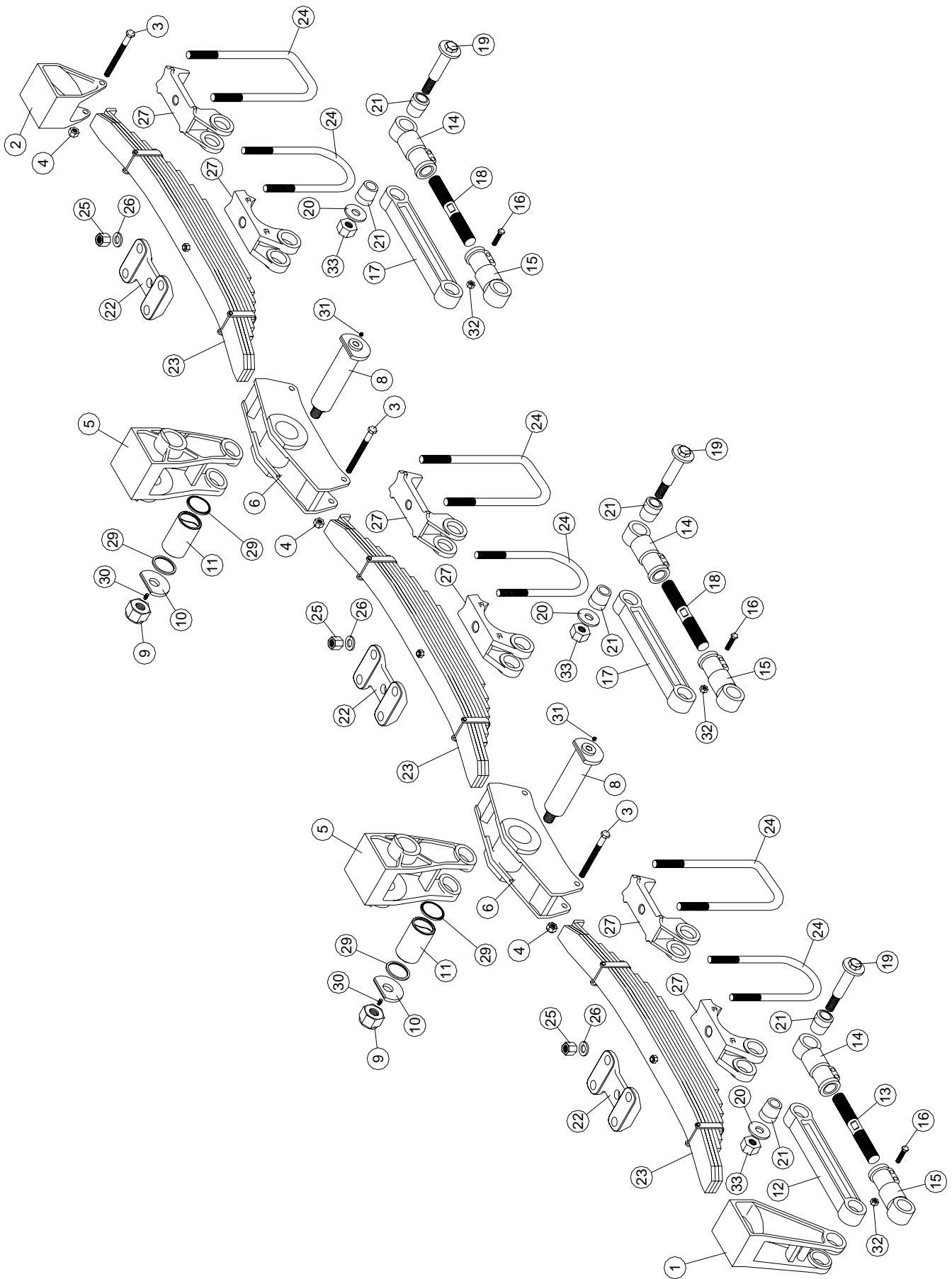
Note 1: Axle Spacing
 Note 2: Specify U-Bolt length for actual spare part replacement.



| Item | Description | 5" Round Axle Beam | | | | | |
|------|---|--------------------|--------------|--------|--------------|----------|--------------|
| | | Single | | Tandem | | Tri-Axle | |
| | | Qty. | Part No. | Qty. | Part No. | Qty. | Part No. |
| 1 | Front Hanger | 2 | 900201 | 2 | 900201 | 2 | 900201 |
| 2 | Rear Hanger | 2 | 900203 | 2 | 900203 | 2 | 900203 |
| 3 | M12 x 1.75 x 120 Ht. Hex Bolt | 2 | HB12/175/120 | 2 | HB12/175/120 | 2 | HB12/175/120 |
| 4 | M12 x 1.75 Nylon Locknut | 6 | LN12/175 | 14 | LN12/175 | 22 | LN12/175 |
| 5 | Equalizer Hanger - 1230mm, 1360mm (1) | | | 2 | 900202 | 4 | 900202 |
| 5 | Equalizer Hanger - 1540mm (1) | | | 2 | 900204 | 4 | 900204 |
| 6 | Equalizer - 1230mm (1) | | | 2 | 900007 | 4 | 900007 |
| 6 | Equalizer - 1360mm (1) | | | 2 | 900206 | 4 | 900206 |
| 6 | Equalizer - 1540mm (1) | | | 2 | 900010 | 4 | 900010 |
| 7 | M12 x 1.75 x 130 Ht. Hex Bolt | | | 4 | HB12/175/130 | 8 | HB12/175/130 |
| 8 | Equalizer Shaft | | | 2 | 900018 | 4 | 900018 |
| 9 | M24 x 3.0 Nylon Locknut | | | 10 | LN24/300 | 16 | LN24/300 |
| 10 | Equalizer Washer | | | 2 | 901009 | 4 | 901009 |
| 11 | Equalizer Bush | | | 4 | 901020 | 8 | 901020 |
| 11 | Equalizer Bush (Poly) | | | 4 | 901020P | 8 | 901020P |
| 12 | Fixed Torque Arm | 1 | 901100/395 | 1 | 901100/395 | 1 | 901100/395 |
| 13 | Adjustable Torque Arm Screw (260mm) | 1 | 900033/01 | 1 | 900033/01 | 1 | 900033/01 |
| 14 | Adjustable Torque Arm End R/H | 1 | 900024R | 2 | 900024R | 3 | 900024R |
| 15 | Adjustable Torque Arm End L/H | 1 | 900024L | 2 | 900024L | 3 | 900024L |
| 16 | M12 x 1.75 x 50 Ht. Hex Bolt | 4 | HB12/175/050 | 8 | HB12/175/050 | 12 | HB12/175/050 |
| 17 | Fixed Torque Arm - 1230mm (1) | | | 1 | 901100/470 | 2 | 901100/470 |
| 17 | Fixed Torque Arm - 1360mm (1) | | | 1 | 901100/525 | 2 | 901100/525 |
| 17 | Fixed Torque Arm - 1540mm (1) | | | 1 | 901100/430 | 2 | 901100/430 |
| 18 | Adjustable Torque Arm Screw (260mm) | | | 1 | 900033/01 | 2 | 900033/01 |
| 18 | Adjustable Torque Arm Screw (350mm) | | | 1 | 900033/02 | 2 | 900033/02 |
| 19 | Torque Arm Pin | 4 | 930017 | 8 | 930017 | 12 | 930017 |
| 20 | Torque Arm Washer | 4 | 901010 | 8 | 901010 | 12 | 901010 |
| 21 | Torque Arm Bush | 8 | 770701 | 16 | 770701 | 24 | 770701 |
| 23 | 8 Leaf Spring | 2 | 770706 | 4 | 770706 | 6 | 770706 |
| 23 | 10 Leaf Spring | 2 | 770710 | 2 | 770710 | 2 | 770710 |
| 24 | M22 x 2.0 U-Bolt - 8 Leaf Spring (2) | 4 | 770721 | 8 | 770721 | 12 | 770721 |
| 24 | M24 x 2.0 U-Bolt - 10 Leaf Spring (2) | 4 | 503281 | 4 | 503281 | 4 | 503281 |
| 25 | M22 x 2.0 Nut | 8 | 770723 | 16 | 770723 | 24 | 770723 |
| 25 | M24 x 2.0 Nut | 8 | 503288 | 8 | 503288 | 8 | 503288 |
| 26 | M22 Washer | 8 | 770724 | 16 | 770724 | 24 | 770724 |
| 26 | M24 Washer | 8 | 503289 | 8 | 503289 | 8 | 503289 |
| 27 | Spring Seat | 2 | 900046 | 4 | 900046 | 6 | 900046 |
| 28 | Bottom Clamp Plate, Underslung - 8 Leaf Spring | 2 | 770778 | 4 | 770778 | 6 | 770778 |
| 28 | Bottom Clamp Plate, Underslung - 10 Leaf Spring | 2 | 770778/01 | 2 | 770778/01 | 2 | 770778/01 |

YTE75 Underslung (Option) - Rev.B(04.05.06)

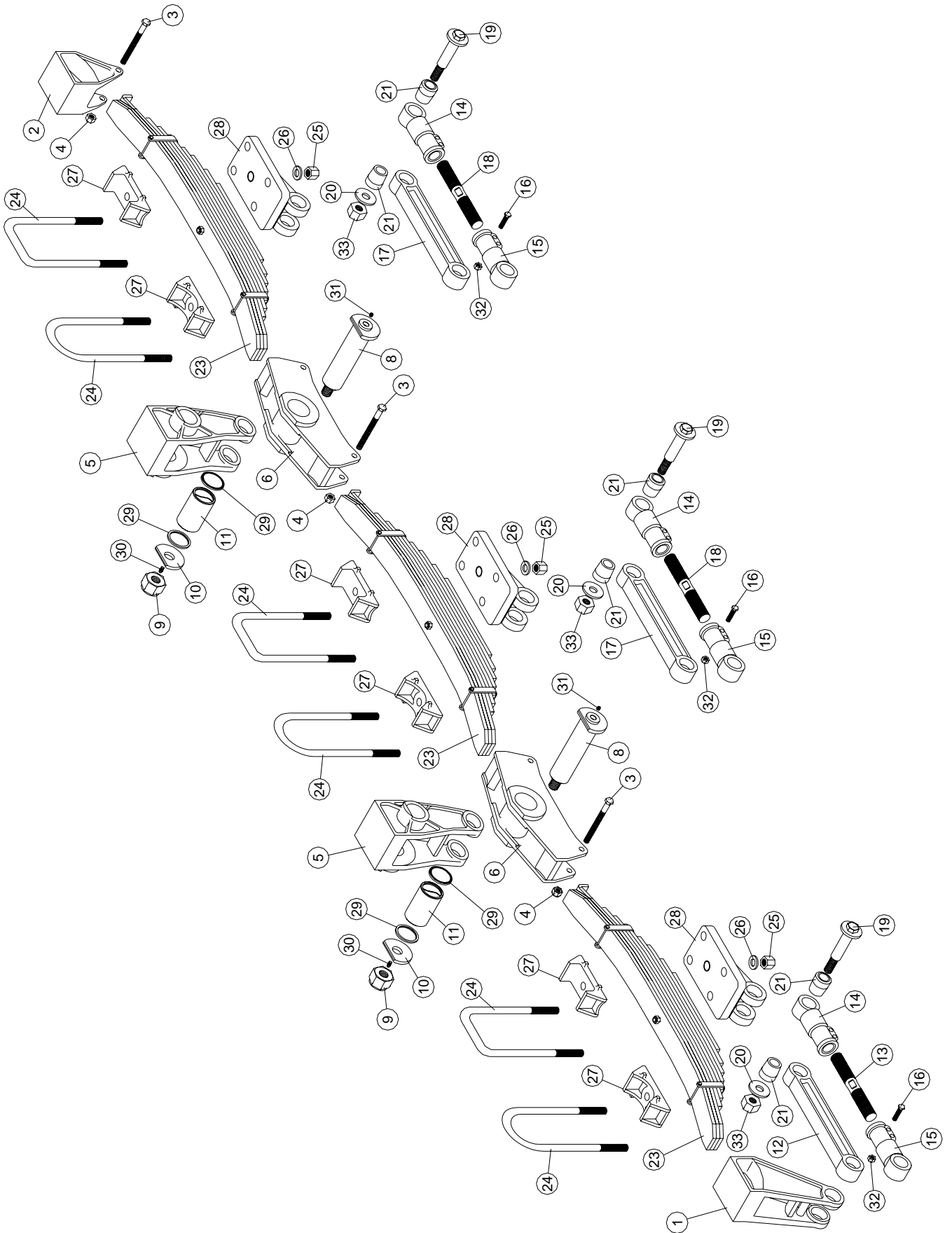
Note 1: Axle Spacing
Note 2: Specify U-Bolt length for actual spare part replacement.



| Item | Description | 5" Round Axle Beam | | | | | | 6" Square Axle Beam | | | | | |
|------|---|--------------------|--------------|--------|--------------|----------|--------------|---------------------|--------------|--------|--------------|----------|--------------|
| | | Single | | Tandem | | Tri-Axle | | Single | | Tandem | | Tri-Axle | |
| | | Qty. | Part No. | Qty. | Part No. | Qty. | Part No. | Qty. | Part No. | Qty. | Part No. | Qty. | Part No. |
| 1 | Front Hanger | 2 | 900207/WP | 2 | 900207/WP | 2 | 900207/WP | 2 | 900207/WP | 2 | 900207/WP | 2 | 900207/WP |
| 2 | Rear Hanger | 2 | 900208/WP | 2 | 900208/WP | 2 | 900208/WP | 2 | 900208/WP | 2 | 900208/WP | 2 | 900208/WP |
| 3 | M16 x 2.0 x 150 Ht. Hex Bolt | 2 | HB16/200/130 | 6 | HB16/200/130 | 10 | HB16/200/130 | 6 | HB16/200/130 | 6 | HB16/200/130 | 10 | HB16/200/130 |
| 4 | M16 x 2.0 Nylon Locknut | 2 | LN16/200 | 6 | LN16/200 | 10 | LN16/200 | 6 | LN16/200 | 6 | LN16/200 | 10 | LN16/200 |
| 5 | Equalizer Hanger | 2 | 930003 | 2 | 930003 | 4 | 930003 | 2 | 930003 | 2 | 930003 | 4 | 930003 |
| 6 | Equalizer - 1300mm (1) | 2 | 900209/WP | 2 | 900209/WP | 4 | 900209/WP | 2 | 900209/WP | 2 | 900209/WP | 4 | 900209/WP |
| 6 | Equalizer - 1540mm (1) | 2 | 900210 | 2 | 900210 | 4 | 900210 | 2 | 900210 | 2 | 900210 | 4 | 900210 |
| 8 | Equalizer Shaft | 2 | 930015 | 2 | 930015 | 4 | 930015 | 2 | 930015 | 2 | 930015 | 4 | 930015 |
| 8 | Equalizer Shaft (Hard Chromed) Optional | 2 | 930172 | 2 | 930172 | 4 | 930172 | 2 | 930172 | 2 | 930172 | 4 | 930172 |
| 9 | M30 x 3.5 Nylon Locknut | 2 | LN30/350 | 2 | LN30/350 | 4 | LN30/350 | 2 | LN30/350 | 2 | LN30/350 | 4 | LN30/350 |
| 10 | Equalizer Washer | 2 | 930203 | 2 | 930203 | 4 | 930203 | 2 | 930203 | 2 | 930203 | 4 | 930203 |
| 11 | Equalizer Bush | 2 | 930009 | 2 | 930009 | 4 | 930009 | 2 | 930009 | 2 | 930009 | 4 | 930009 |
| 11 | Equalizer Bush (Vesconite) Optional | 2 | 930170 | 2 | 930170 | 4 | 930170 | 2 | 930170 | 2 | 930170 | 4 | 930170 |
| 12 | Fixed Torque Arm | 1 | 901100/395 | 1 | 901100/395 | 1 | 901100/395 | 1 | 901100/395 | 1 | 901100/395 | 1 | 901100/395 |
| 13 | Adjustable Torque Arm Screw (260mm) | 1 | 900033/01 | 1 | 900033/01 | 1 | 900033/01 | 1 | 900033/01 | 1 | 900033/01 | 1 | 900033/01 |
| 14 | Adjustable Torque Arm End R/H | 1 | 900024R | 2 | 900024R | 3 | 900024R | 1 | 900024R | 2 | 900024R | 3 | 900024R |
| 15 | Adjustable Torque Arm End L/H | 1 | 900024L | 2 | 900024L | 3 | 900024L | 1 | 900024L | 2 | 900024L | 3 | 900024L |
| 16 | M12 x 1.75 x 50 Ht. Hex Bolt | 4 | HB12/175/050 | 8 | HB12/175/050 | 12 | HB12/175/050 | 4 | HB12/175/050 | 8 | HB12/175/050 | 12 | HB12/175/050 |
| 17 | Fixed Torque Arm - 1300mm (1) | 1 | 901100/525 | 1 | 901100/525 | 2 | 901100/525 | 2 | 901100/525 | 1 | 901100/525 | 2 | 901100/525 |
| 17 | Fixed Torque Arm - 1360mm (1) | 1 | 901100/550 | 1 | 901100/550 | 2 | 901100/550 | 2 | 901100/550 | 1 | 901100/550 | 2 | 901100/550 |
| 17 | Fixed Torque Arm - 1540mm (1) | 1 | 901100/620 | 1 | 901100/620 | 2 | 901100/620 | 2 | 901100/620 | 1 | 901100/620 | 2 | 901100/620 |
| 18 | Adjustable Torque Arm Screw (350mm) | 1 | 900033/02 | 1 | 900033/02 | 2 | 900033/02 | 2 | 900033/02 | 1 | 900033/02 | 2 | 900033/02 |
| 18 | Adjustable Torque Arm Screw (420mm) | 1 | 900033/03 | 1 | 900033/03 | 2 | 900033/03 | 2 | 900033/03 | 1 | 900033/03 | 2 | 900033/03 |
| 18 | Adjustable Torque Arm Screw (480mm) | 1 | 900033/04 | 1 | 900033/04 | 2 | 900033/04 | 2 | 900033/04 | 1 | 900033/04 | 2 | 900033/04 |
| 19 | Torque Arm Pin | 4 | 930017 | 8 | 930017 | 12 | 930017 | 4 | 930017 | 8 | 930017 | 12 | 930017 |
| 20 | Torque Arm Washer | 4 | 901010 | 8 | 901010 | 12 | 901010 | 4 | 901010 | 8 | 901010 | 12 | 901010 |
| 21 | Torque Arm Bush (Poly) | 8 | 770701P | 16 | 770701P | 24 | 770701P | 8 | 770701P | 16 | 770701P | 24 | 770701P |
| 21 | Torque Arm Bush (Poly) Oversize Option | 8 | 901019P | 16 | 901019P | 24 | 901019P | 8 | 901019P | 16 | 901019P | 24 | 901019P |
| 22 | Top Clamp Plate | 2 | 787697/01 | 4 | 787697/01 | 6 | 787697/01 | 2 | 787697/01 | 4 | 787697/01 | 6 | 787697/01 |
| 23 | 10 Leaf Spring | 2 | 770710 | 4 | 770710 | 6 | 770710 | 2 | 770710 | 4 | 770710 | 6 | 770710 |
| 24 | M24 x 2.0 U-Bolt (2) | 4 | 503281 | 8 | 503281 | 12 | 503281 | 4 | 503281 | 8 | 503281 | 12 | 503281 |
| 25 | M24 x 2.0 Nut | 8 | 503288 | 16 | 503288 | 24 | 503288 | 8 | 503288 | 16 | 503288 | 24 | 503288 |
| 26 | M24 Washer | 8 | 503289 | 16 | 503289 | 24 | 503289 | 8 | 503289 | 16 | 503289 | 24 | 503289 |
| 27 | Spring Seat | 2 | 900027 | 4 | 900027 | 6 | 900027 | 2 | 900027 | 4 | 900027 | 6 | 900027 |
| 29 | Lip Seal 5mm | 4 | 930071/01 | 4 | 930071/01 | 8 | 930071/01 | 4 | 930071/01 | 4 | 930071/01 | 8 | 930071/01 |
| 30 | M8 x 1.0 Equalizer Shaft Grease Nipple | 2 | 930048 | 2 | 930048 | 4 | 930048 | 2 | 930048 | 2 | 930048 | 4 | 930048 |
| 31 | M8 x 1.0 Equalizer Shaft Plug | 2 | 930048/01 | 2 | 930048/01 | 4 | 930048/01 | 2 | 930048/01 | 2 | 930048/01 | 4 | 930048/01 |
| 32 | M12 x 1.75 Nylon Locknut | 4 | LN12/175 | 8 | LN12/175 | 12 | LN12/175 | 4 | LN12/175 | 8 | LN12/175 | 12 | LN12/175 |
| 33 | M24 x 3.0 Nylon Locknut | 4 | LN24/300 | 8 | LN24/300 | 12 | LN24/300 | 4 | LN24/300 | 8 | LN24/300 | 12 | LN24/300 |

Note 1: Axle Spacing
 Note 2: Specify U-Bolt length for actual spare part replacement.

YTE75/90 Overslung - Rev.B(04.05.06)

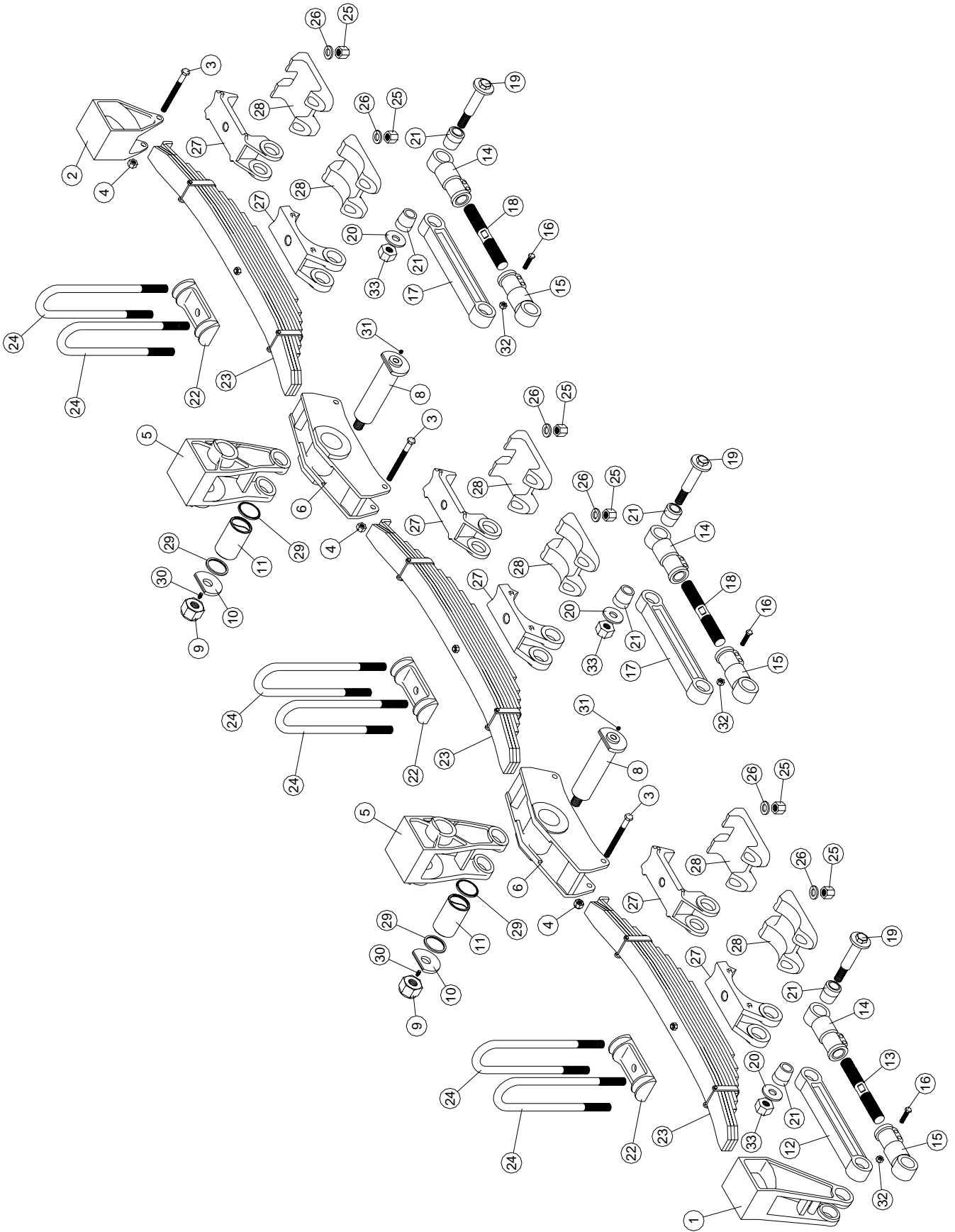


| Item | Description | 5" Round Axle Beam | | | | | | 6" Square Axle Beam | | | | | |
|------|---|--------------------|--------------|--------|--------------|----------|--------------|---------------------|--------------|--------|--------------|----------|--------------|
| | | Single | | Tandem | | Tri-Axle | | Single | | Tandem | | Tri-Axle | |
| | | Qty. | Part No. | Qty. | Part No. | Qty. | Part No. | Qty. | Part No. | Qty. | Part No. | Qty. | Part No. |
| 1 | Front Hanger | 2 | 900207/WP | 2 | 900207/WP | 2 | 900207/WP | 2 | 900207/WP | 2 | 900207/WP | 2 | 900207/WP |
| 2 | Rear Hanger | 2 | 900208/WP | 2 | 900208/WP | 2 | 900208/WP | 2 | 900208/WP | 2 | 900208/WP | 2 | 900208/WP |
| 3 | M16 x 2.0 x 150 Ht. Hex Bolt | 2 | HB16/200/130 | 6 | HB16/200/130 | 10 | HB16/200/130 | 2 | HB16/200/130 | 6 | HB16/200/130 | 10 | HB16/200/130 |
| 4 | M16 x 2.0 Nylon Locknut | 2 | LN16/200 | 6 | LN16/200 | 10 | LN16/200 | 2 | LN16/200 | 6 | LN16/200 | 10 | LN16/200 |
| 5 | Equalizer Hanger | | | 2 | 930003 | 4 | 930003 | 4 | 930003 | 2 | 930003 | 4 | 930003 |
| 6 | Equalizer - 1300mm (1) | | | 2 | 900209/WP | 4 | 900209/WP | 4 | 900209/WP | 2 | 900209/WP | 4 | 900209/WP |
| 6 | Equalizer - 1540mm (1) | | | 2 | 900210 | 4 | 900210 | 4 | 900210 | 2 | 900210 | 4 | 900210 |
| 8 | Equalizer Shaft | | | 2 | 930015 | 4 | 930015 | 4 | 930015 | 2 | 930015 | 4 | 930015 |
| 8 | Equalizer Shaft (Hard Chromed) Optional | | | 2 | 930172 | 4 | 930172 | 4 | 930172 | 2 | 930172 | 4 | 930172 |
| 9 | M30 x 3.5 Nylon Locknut | | | 2 | LN30/350 | 4 | LN30/350 | 4 | LN30/350 | 2 | LN30/350 | 4 | LN30/350 |
| 10 | Equalizer Washer | | | 2 | 930203 | 4 | 930203 | 4 | 930203 | 2 | 930203 | 4 | 930203 |
| 11 | Equalizer Bush | | | 2 | 930009 | 4 | 930009 | 4 | 930009 | 2 | 930009 | 4 | 930009 |
| 11 | Equalizer Bush (Vesconite) Optional | | | 2 | 930170 | 4 | 930170 | 4 | 930170 | 2 | 930170 | 4 | 930170 |
| 12 | Fixed Torque Arm | 1 | 901100/370 | 1 | 901100/370 | 1 | 901100/370 | 1 | 901100/370 | 1 | 901100/370 | 1 | 901100/370 |
| 13 | Adjustable Torque Arm Screw (260mm) | 1 | 900033/01 | 1 | 900033/01 | 1 | 900033/01 | 1 | 900033/01 | 1 | 900033/01 | 1 | 900033/01 |
| 14 | Adjustable Torque Arm End R/H | 1 | 900024R | 2 | 900024R | 3 | 900024R | 1 | 900024R | 2 | 900024R | 3 | 900024R |
| 15 | Adjustable Torque Arm End L/H | 1 | 900024L | 2 | 900024L | 3 | 900024L | 1 | 900024L | 2 | 900024L | 3 | 900024L |
| 16 | M12 x 1.75 x 50 Ht. Hex Bolt | 4 | HB12/175/050 | 8 | HB12/175/050 | 12 | HB12/175/050 | 4 | HB12/175/050 | 8 | HB12/175/050 | 12 | HB12/175/050 |
| 17 | Fixed Torque Arm - 1300mm (1) | | | 1 | 901100/495 | 2 | 901100/495 | 2 | 901100/495 | 1 | 901100/495 | 2 | 901100/495 |
| 17 | Fixed Torque Arm - 1360mm (1) | | | 1 | 901100/525 | 2 | 901100/525 | 2 | 901100/525 | 1 | 901100/525 | 2 | 901100/525 |
| 17 | Fixed Torque Arm - 1540mm (1) | | | 1 | 901100/605 | 2 | 901100/605 | 2 | 901100/605 | 1 | 901100/605 | 2 | 901100/605 |
| 18 | Adjustable Torque Arm Screw (350mm) | | | 1 | 900033/02 | 1 | 900033/02 | 2 | 900033/02 | 2 | 900033/02 | 2 | 900033/02 |
| 18 | Adjustable Torque Arm Screw (420mm) | | | 1 | 900033/03 | 1 | 900033/03 | 2 | 900033/03 | 2 | 900033/03 | 2 | 900033/03 |
| 19 | Torque Arm Pin | 4 | 930017 | 8 | 930017 | 12 | 930017 | 4 | 930017 | 8 | 930017 | 12 | 930017 |
| 20 | Torque Arm Washer | 4 | 901010 | 8 | 901010 | 12 | 901010 | 4 | 901010 | 8 | 901010 | 12 | 901010 |
| 21 | Torque Arm Bush (Poly) | 8 | 770701P | 16 | 770701P | 24 | 770701P | 8 | 770701P | 16 | 770701P | 24 | 770701P |
| 23 | 10 Leaf Spring | 2 | 770710 | 4 | 770710 | 6 | 770710 | 2 | 770710 | 4 | 770710 | 6 | 770710 |
| 24 | M24 x 2.0 U-Bolt (2) | 4 | 503281 | 8 | 503281 | 12 | 503281 | 4 | 773011 | 8 | 773011 | 12 | 773011 |
| 25 | M24 x 2.0 Nut | 8 | 503288 | 16 | 503288 | 24 | 503288 | 8 | 503288 | 16 | 503288 | 24 | 503288 |
| 26 | M24 Washer | 8 | 503289 | 16 | 503289 | 24 | 503289 | 8 | 503289 | 16 | 503289 | 24 | 503289 |
| 27 | Spring Seat | 2 | 900046 | 4 | 900046 | 6 | 900046 | 2 | 900211 | 4 | 900211 | 6 | 900211 |
| 28 | Bottom Clamp Plate, Underslung | 2 | 770778/01 | 4 | 770778/01 | 6 | 770778/01 | 2 | 770778/02 | 4 | 770778/02 | 6 | 770778/02 |
| 29 | Lip Seal 5mm | | | 4 | 930071/01 | 8 | 930071/01 | 4 | 930071/01 | 4 | 930071/01 | 8 | 930071/01 |
| 30 | M8 x 1.0 Equalizer Shaft Grease Nipple | | | 2 | 930048 | 4 | 930048 | 1 | 901100/370 | 2 | 930048 | 4 | 930048 |
| 31 | M8 x 1.0 Equalizer Shaft Plug | | | 2 | 930048/01 | 4 | 930048/01 | 1 | 900033/01 | 2 | 930048/01 | 4 | 930048/01 |
| 32 | M12 x 1.75 Nylon Locknut | 4 | LN12/175 | 8 | LN12/175 | 12 | LN12/175 | 4 | LN12/175 | 8 | LN12/175 | 12 | LN12/175 |
| 33 | M24 x 3.0 Nylon Locknut | 4 | LN24/300 | 8 | LN24/300 | 12 | LN24/300 | 4 | LN24/300 | 8 | LN24/300 | 12 | LN24/300 |

Note 1: Axle Spacing
 Note 2: Specify U-Bolt length for actual spare part replacement.

YTE75/90 Underslung - Rev.B(04.05.06)

(for Standard Reverse U-Bolt Clamping)



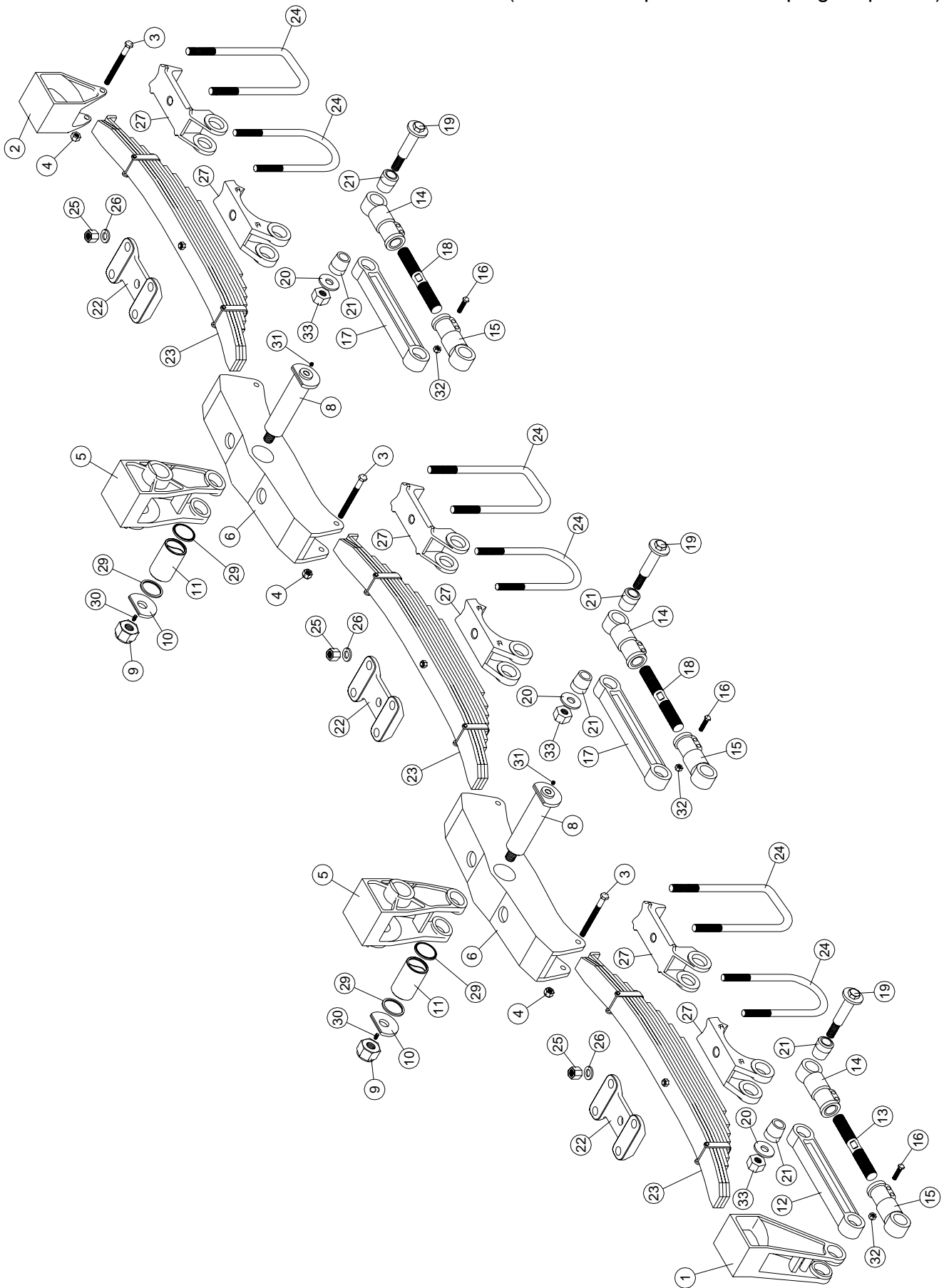
(for Standard Reverse U-Bolt Clamping)

| Item | Description | 6" Round Axle Beam | | | 6" Square Axle Beam | | |
|------|---|--------------------|--------------|----------|---------------------|--------|--------------|
| | | Single | Tandem | Tri-Axle | Single | Tandem | Tri-Axle |
| | | Qty. | Part No. | Qty. | Part No. | Qty. | Part No. |
| 1 | Front Hanger | 2 | 930001/WP | 2 | 930001/WP | 2 | 930001/WP |
| 2 | Rear Hanger | 2 | 930002/WP | 2 | 930002/WP | 2 | 930002/WP |
| 3 | M16 x 2.0 x 150 Ht. Hex. Bolt | 2 | HB16/200/150 | 10 | HB16/200/150 | 6 | HB16/200/150 |
| 4 | M16 x 2.0 Nylon Locknut | 2 | LN16/200 | 10 | LN16/200 | 6 | LN16/200 |
| 5 | Equalizer Hanger | 2 | 930003 | 4 | 930003 | 2 | 930003 |
| 6 | Equalizer - 1300mm (1) | 2 | 930004 | 4 | 930004 | 2 | 930004 |
| 6 | Equalizer - 1540mm (1) | 2 | 930039 | 4 | 930039 | 2 | 930039 |
| 8 | Equalizer Shaft | 2 | 930015 | 4 | 930015 | 2 | 930015 |
| 8 | Equalizer Shaft (Hard Chromed) Optional | 2 | 930172 | 4 | 930172 | 2 | 930172 |
| 9 | M30 x 3.5 Nylon Locknut | 2 | LN30/350 | 4 | LN30/350 | 2 | LN30/350 |
| 10 | Equalizer Washer | 2 | 930203 | 4 | 930203 | 2 | 930203 |
| 11 | Equalizer Bush | 2 | 930009 | 4 | 930009 | 2 | 930009 |
| 11 | Equalizer Bush (Vesconite) Optional | 2 | 930170 | 4 | 930170 | 2 | 930170 |
| 12 | Fixed Torque Arm | 1 | 901100/380 | 1 | 901100/380 | 1 | 901100/380 |
| 13 | Adjustable Torque Arm Screw (260mm) | 1 | 900033/01 | 1 | 900033/01 | 1 | 900033/01 |
| 14 | Adjustable Torque Arm End R/H | 1 | 900024R | 3 | 900024R | 2 | 900024R |
| 15 | Adjustable Torque Arm End L/H | 1 | 900024L | 3 | 900024L | 2 | 900024L |
| 16 | M12 x 1.75 x 50 Ht. Hex. Bolt | 4 | HB12/175/050 | 12 | HB12/175/050 | 8 | HB12/175/050 |
| 17 | Fixed Torque Arm - 1300mm (1) | 1 | 901100/495 | 2 | 901100/495 | 1 | 901100/495 |
| 17 | Fixed Torque Arm - 1360mm (1) | 1 | 901100/525 | 2 | 901100/525 | 2 | 901100/525 |
| 17 | Fixed Torque Arm - 1540mm (1) | 1 | 901100/620 | 2 | 901100/620 | 2 | 901100/620 |
| 18 | Adjustable Torque Arm Screw (350mm) | 1 | 900033/02 | 2 | 900033/02 | 1 | 900033/02 |
| 18 | Adjustable Torque Arm Screw (480mm) | 1 | 900033/04 | 2 | 900033/04 | 1 | 900033/04 |
| 19 | Torque Arm Pin | 4 | 930017 | 12 | 930017 | 8 | 930017 |
| 20 | Torque Arm Washer | 4 | 901010 | 12 | 901010 | 8 | 901010 |
| 21 | Torque Arm Bush (Poly) | 8 | 770701P | 24 | 770701P | 16 | 770701P |
| 22 | Top Clamp Plate | 2 | 930006 | 6 | 930006 | 4 | 930006 |
| 23 | 10 Leaf Spring | 2 | 930010 | 6 | 930010 | 4 | 930010 |
| 24 | M24 x 2.0 U-Bolt (2) | 4 | 930016 | 12 | 930016 | 8 | 930016 |
| 25 | M24 x 2.0 Nut | 8 | 503288 | 24 | 503288 | 16 | 503288 |
| 26 | M24 Washer | 8 | 503289 | 24 | 503289 | 16 | 503289 |
| 27 | Spring Seat | 2 | 930030 | 6 | 930030 | 4 | 930011 |
| 28 | Bottom Clamp Plate | 2 | 930053 | 6 | 930053 | 4 | 930008 |
| 29 | Lip Seal 5mm | 4 | 930071/01 | 8 | 930071/01 | 4 | 930071/01 |
| 30 | M8 x 1.0 Equalizer Shaft Grease Nipple | 2 | 930048 | 4 | 930048 | 2 | 930048 |
| 31 | M8 x 1.0 Equalizer Shaft Plug | 2 | 930048/01 | 4 | 930048/01 | 2 | 930048/01 |
| 32 | M12 x 1.75 Nylon Locknut | 4 | LN12/175 | 12 | LN12/175 | 8 | LN12/175 |
| 33 | M24 x 3.0 Nylon Locknut | 4 | LN24/300 | 12 | LN24/300 | 8 | LN24/300 |

YTE90 Overslung - Rev.C(06.03.08)

Note 1: Axle Spacing
Note 2: Specify U-Bolt length for actual spare part replacement.

(for Bottom-Up U-Bolt Clamping - Optional)

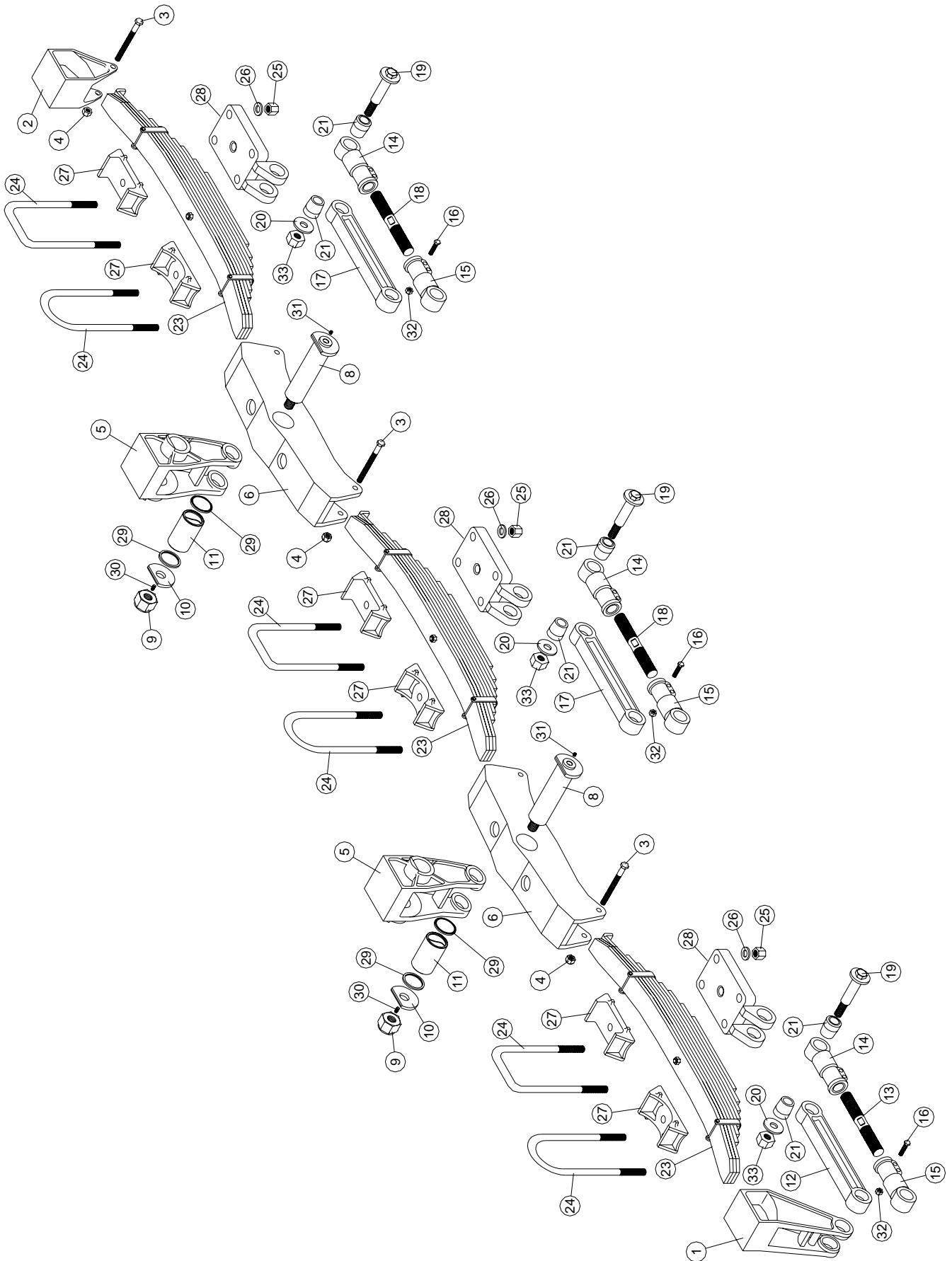


(for Bottom-Up U-Bolt Clamping - Optional)

| Item | Description | 6" Round Axle Beam | | | 6" Square Axle Beam | | |
|------|---|--------------------|--------------|----------|---------------------|----------|--------------|
| | | Single | Tandem | Tri-Axle | Tri-Axle | Tri-Axle | Tri-Axle |
| | | Qty. | Part No. | Qty. | Part No. | Qty. | Part No. |
| 1 | Front Hanger | 2 | 930001/WP | 2 | 930001/WP | 2 | 930001/WP |
| 2 | Rear Hanger | 2 | 930002/WP | 2 | 930002/WP | 2 | 930002/WP |
| 3 | M16 x 2.0 x 150 Ht. Hex. Bolt | 2 | HB16/200/150 | 6 | HB16/200/150 | 10 | HB16/200/150 |
| 4 | M16 x 2.0 Nylon Locknut | 2 | LN16/200 | 6 | LN16/200 | 10 | LN16/200 |
| 5 | Equalizer Hanger | | | 2 | 930003 | 4 | 930003 |
| 6 | Equalizer - 1300mm (1) | | | 2 | 930004 | 4 | 930004 |
| 6 | Equalizer - 1540mm (1) | | | 2 | 930039 | 4 | 930039 |
| 8 | Equalizer Shaft | | | 2 | 930015 | 4 | 930015 |
| 8 | Equalizer Shaft (Hard Chromed) Optional | | | 2 | 930172 | 4 | 930172 |
| 9 | M30 x 3.5 Nylon Locknut | | | 2 | LN30/350 | 4 | LN30/350 |
| 10 | Equalizer Washer | | | 2 | 930203 | 4 | 930203 |
| 11 | Equalizer Bush | | | 2 | 930009 | 4 | 930009 |
| 11 | Equalizer Bush (Vesconite) Optional | | | 2 | 930170 | 4 | 930170 |
| 12 | Fixed Torque Arm | 1 | 901100/380 | 1 | 901100/380 | 1 | 901100/380 |
| 13 | Adjustable Torque Arm Screw (260mm) | 1 | 900033/01 | 1 | 900033/01 | 1 | 900033/01 |
| 14 | Adjustable Torque Arm End R/H | 1 | 900024R | 2 | 900024R | 3 | 900024R |
| 15 | Adjustable Torque Arm End L/H | 1 | 900024L | 2 | 900024L | 3 | 900024L |
| 16 | M12 x 1.75 x 50 Ht. Hex. Bolt | 4 | HB12/175/050 | 8 | HB12/175/050 | 12 | HB12/175/050 |
| 17 | Fixed Torque Arm - 1300mm (1) | | | 1 | 901100/495 | 2 | 901100/495 |
| 17 | Fixed Torque Arm - 1360mm (1) | | | 1 | 901100/525 | 2 | 901100/525 |
| 17 | Fixed Torque Arm - 1540mm (1) | | | 1 | 901100/620 | 2 | 901100/620 |
| 18 | Adjustable Torque Arm Screw (350mm) | | | 1 | 900033/02 | 2 | 900033/02 |
| 18 | Adjustable Torque Arm Screw (480mm) | | | 1 | 900033/04 | 2 | 900033/04 |
| 19 | Torque Arm Pin | 4 | 930017 | 8 | 930017 | 12 | 930017 |
| 20 | Torque Arm Washer | 4 | 901010 | 8 | 901010 | 12 | 901010 |
| 21 | Torque Arm Bush (Poly) | 8 | 770701P | 16 | 770701P | 24 | 770701P |
| 22 | Top Clamp Plate | 2 | 930035 | 4 | 930035 | 6 | 930035 |
| 23 | 10 Leaf Spring | 2 | 930010 | 4 | 930010 | 6 | 930010 |
| 24 | M24 x 2.0 U-Bolt (2) | 4 | 503283 | 8 | 503283 | 12 | 773011 |
| 25 | M24 x 2.0 Nut | 8 | 503288 | 16 | 503288 | 24 | 503288 |
| 26 | M24 Washer | 8 | 503289 | 16 | 503289 | 24 | 503289 |
| 27 | Spring Seat | 2 | 930030 | 4 | 930030 | 6 | 930011 |
| 29 | Lip Seal 5mm | | | 4 | 930071/01 | 8 | 930071/01 |
| 30 | M8 x 1.0 Equalizer Shaft Grease Nipple | | | 2 | 930048 | 4 | 930048 |
| 31 | M8 x 1.0 Equalizer Shaft Plug | | | 2 | 930048/01 | 4 | 930048/01 |
| 32 | M12 x 1.75 Nylon Locknut | 4 | LN12/175 | 8 | LN12/175 | 12 | LN12/175 |
| 33 | M24 x 3.0 Nylon Locknut | 4 | LN24/300 | 8 | LN24/300 | 12 | LN24/300 |

YTE90 Overslung Option - Rev.C(06.03.08)

Note 1: Axle Spacing
 Note 2: Specify U-Bolt length for actual spare part replacement.



| Item | Description | 6" Round Axle Beam | | | | | | 6" Square Axle Beam | | | | | |
|------|---|--------------------|--------------|--------|--------------|----------|--------------|---------------------|--------------|--------|--------------|----------|--------------|
| | | Single | | Tandem | | Tri-Axle | | Single | | Tandem | | Tri-Axle | |
| | | Qty. | Part No. | Qty. | Part No. | Qty. | Part No. | Qty. | Part No. | Qty. | Part No. | Qty. | Part No. |
| 1 | Front Hanger | 2 | 930001/WP | 2 | 930001/WP | 2 | 930001/WP | 2 | 930001/WP | 2 | 930001/WP | 2 | 930001/WP |
| 2 | Rear Hanger | 2 | 930002/WP | 2 | 930002/WP | 2 | 930002/WP | 2 | 930002/WP | 2 | 930002/WP | 2 | 930002/WP |
| 3 | M16 x 2.0 x 150 Ht. Hex. Bolt | 2 | HB16/200/150 | 6 | HB16/200/150 | 10 | HB16/200/150 | 2 | HB16/200/150 | 6 | HB16/200/150 | 10 | HB16/200/150 |
| 4 | M16 x 2.0 Nylon Locknut | 2 | LN16/200 | 6 | LN16/200 | 10 | LN16/200 | 2 | LN16/200 | 6 | LN16/200 | 10 | LN16/200 |
| 5 | Equalizer Hanger | | | 2 | 930003 | 4 | 930003 | 4 | 930003 | 2 | 930003 | 4 | 930003 |
| 6 | Equalizer - 1300mm (1) | | | 2 | 930004 | 4 | 930004 | 4 | 930004 | 2 | 930004 | 4 | 930004 |
| 6 | Equalizer - 1540mm (1) | | | 2 | 930039 | 4 | 930039 | 4 | 930039 | 2 | 930039 | 4 | 930039 |
| 8 | Equalizer Shaft | | | 2 | 930015 | 4 | 930015 | 4 | 930015 | 2 | 930015 | 4 | 930015 |
| 8 | Equalizer Shaft (Hard Chromed) Optional | | | 2 | 930172 | 4 | 930172 | 4 | 930172 | 2 | 930172 | 4 | 930172 |
| 9 | M30 x 3.5 Nylon Locknut | | | 2 | LN30/350 | 4 | LN30/350 | 4 | LN30/350 | 2 | LN30/350 | 4 | LN30/350 |
| 10 | Equalizer Washer | | | 2 | 930203 | 4 | 930203 | 4 | 930203 | 2 | 930203 | 4 | 930203 |
| 11 | Equalizer Bush | | | 2 | 930009 | 4 | 930009 | 4 | 930009 | 2 | 930009 | 4 | 930009 |
| 11 | Equalizer Bush (Vesconite) Optional | | | 2 | 930170 | 4 | 930170 | 4 | 930170 | 2 | 930170 | 4 | 930170 |
| 12 | Fixed Torque Arm | 1 | 901100/370 | 1 | 901100/370 | 1 | 901100/370 | 1 | 901100/370 | 1 | 901100/370 | 1 | 901100/370 |
| 13 | Adjustable Torque Arm Screw (260mm) | 1 | 900033/01 | 1 | 900033/01 | 1 | 900033/01 | 1 | 900033/01 | 1 | 900033/01 | 1 | 900033/01 |
| 14 | Adjustable Torque Arm End R/H | 1 | 900024R | 2 | 900024R | 3 | 900024R | 1 | 900024R | 2 | 900024R | 3 | 900024R |
| 15 | Adjustable Torque Arm End L/H | 1 | 900024L | 2 | 900024L | 3 | 900024L | 1 | 900024L | 2 | 900024L | 3 | 900024L |
| 16 | M12 x 1.75 x 50 Ht. Hex. Bolt | 4 | HB12/175/050 | 8 | HB12/175/050 | 12 | HB12/175/050 | 4 | HB12/175/050 | 8 | HB12/175/050 | 12 | HB12/175/050 |
| 17 | Fixed Torque Arm - 1300mm (1) | | | 1 | 901100/495 | 2 | 901100/495 | 2 | 901100/495 | 1 | 901100/495 | 2 | 901100/495 |
| 17 | Fixed Torque Arm - 1360mm (1) | | | 1 | 901100/525 | 2 | 901100/525 | 2 | 901100/525 | 1 | 901100/525 | 2 | 901100/525 |
| 17 | Fixed Torque Arm - 1540mm (1) | | | 1 | 901100/605 | 2 | 901100/605 | 2 | 901100/605 | 1 | 901100/605 | 2 | 901100/605 |
| 18 | Adjustable Torque Arm Screw (350mm) | | | 1 | 900033/02 | 2 | 900033/02 | 2 | 900033/02 | 1 | 900033/02 | 2 | 900033/02 |
| 18 | Adjustable Torque Arm Screw (420mm) | | | 1 | 900033/03 | 2 | 900033/03 | 2 | 900033/03 | 1 | 900033/03 | 2 | 900033/03 |
| 19 | Torque Arm Pin | 4 | 930017 | 8 | 930017 | 12 | 930017 | 4 | 930017 | 8 | 930017 | 12 | 930017 |
| 20 | Torque Arm Washer | 4 | 901010 | 8 | 901010 | 12 | 901010 | 4 | 901010 | 8 | 901010 | 12 | 901010 |
| 21 | Torque Arm Bush (Poly) | 8 | 770701P | 16 | 770701P | 24 | 770701P | 8 | 770701P | 16 | 770701P | 24 | 770701P |
| 23 | 10 Leaf Spring | 2 | 930010 | 4 | 930010 | 6 | 930010 | 2 | 930010 | 4 | 930010 | 6 | 930010 |
| 24 | M24 x 2.0 U-Bolt (2) | 4 | 503283 | 8 | 503283 | 12 | 503283 | 4 | 773011 | 8 | 773011 | 12 | 773011 |
| 25 | M24 x 2.0 Nut | 8 | 503288 | 16 | 503288 | 24 | 503288 | 8 | 503288 | 16 | 503288 | 24 | 503288 |
| 26 | M24 Washer | 8 | 503289 | 16 | 503289 | 24 | 503289 | 8 | 503289 | 16 | 503289 | 24 | 503289 |
| 27 | Spring Seat | 2 | 930044 | 4 | 930044 | 6 | 930044 | 2 | 930051 | 4 | 930051 | 6 | 930051 |
| 28 | Bottom Clamp Plate, Underslung | 2 | 930042 | 4 | 930042 | 6 | 930042 | 2 | 930042 | 4 | 930042 | 6 | 930042 |
| 29 | Lip Seal 5mm | | | 4 | 930071/01 | 8 | 930071/01 | 4 | 930071/01 | 8 | 930071/01 | 8 | 930071/01 |
| 30 | M8 x 1.0 Equalizer Shaft Grease Nipple | | | 2 | 930048 | 4 | 930048 | 4 | 930048 | 2 | 930048 | 4 | 930048 |
| 31 | M8 x 1.0 Equalizer Shaft Plug | | | 2 | 930048/01 | 4 | 930048/01 | 4 | 930048/01 | 2 | 930048/01 | 4 | 930048/01 |
| 32 | M12 x 1.75 Nylon Locknut | 4 | LN12/175 | 8 | LN12/175 | 12 | LN12/175 | 4 | LN12/175 | 8 | LN12/175 | 12 | LN12/175 |
| 33 | M24 x 3.0 Nylon Locknut | 4 | LN24/300 | 8 | LN24/300 | 12 | LN24/300 | 4 | LN24/300 | 8 | LN24/300 | 12 | LN24/300 |

Note 1: Axle Spacing
 Note 2: Specify U-Bolt length for actual spare part replacement.

YTE90 Underslung - Rev.C(06.03.08)