

YTE COUPLER

Pressed Turntable for 2" and 3.5" Kingpin

Product Features:

- Pressed high tensile top plate
- Proven hook and plunger design
- Positive locking
- Robust reinforced under structure
- Long service life pivot bush:
(Nylon for YC50-SA, YC90-SA
and Bronze for YC90-DA)
- External adjustment rod
- Replaceable throat plate
- Secure automatic locking
- Mounting pattern : 6 holes DIN

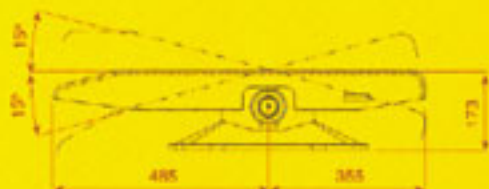
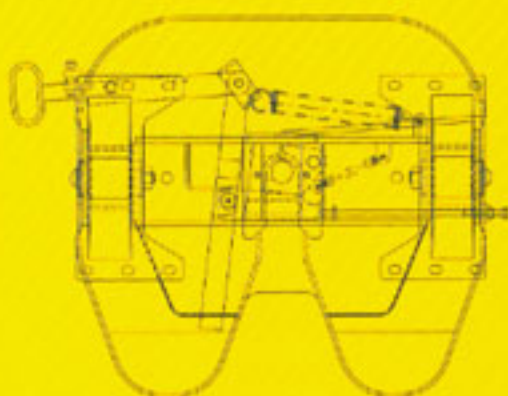
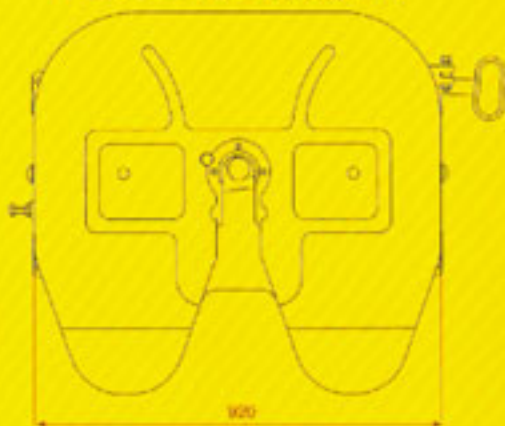
Technical Specifications

Model	YC50-SA	YC90-SA	YC90-DA
Kingpin Size	2"	3.5"	3.5"
Mounting Height (mm)	173	200	250
Vertical Load (kg)	20,000	25,000	25,000
GCM (kg)	50,000	100,000	100,000
Oscillation	Single 15°	Single 15°	Double 15° & 5°
Weight (kg)	120	198	275

Standard Mounting for All Couplers



YC50-SA (2" Kingpin)



(Dimensions shown in mm)

YORK Transport Equipment (Asia) Pte. Ltd.
No. 5 Tuas Avenue 6 Singapore 630295
Tel: 65 - 6861 0577 Fax: 65 - 6861 4045
Email: enquiry@yorktpt.com.sg
Website: www.yorktransport.com

YTE Special Products Pte Ltd
U.K. Office
5 Scott Close, Market Harborough,
Leicestershire LE16 7LN United Kingdom
Tel: 44 - 1858 434425 Fax: 44 - 1858 465125
Email: thp-extrasuk@btconnect.com

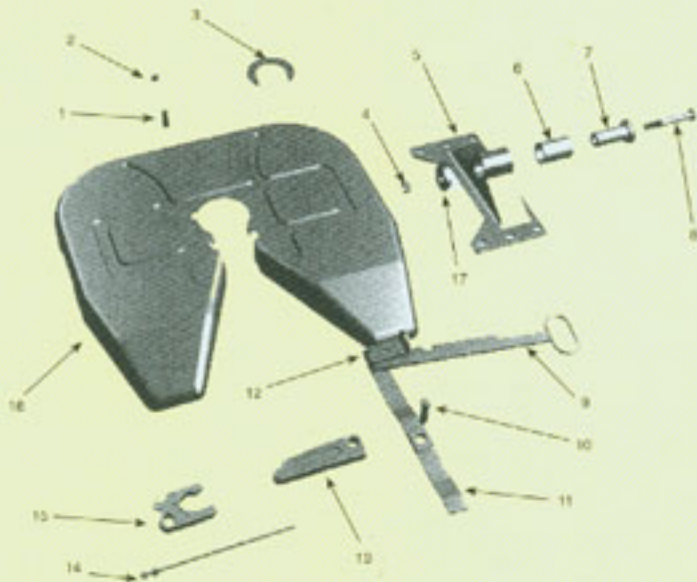
YORK policy is one of continuous development.
We therefore reserve the right to amend
specifications without notice or obligations.

YTE *Leading*
Trailer Parts



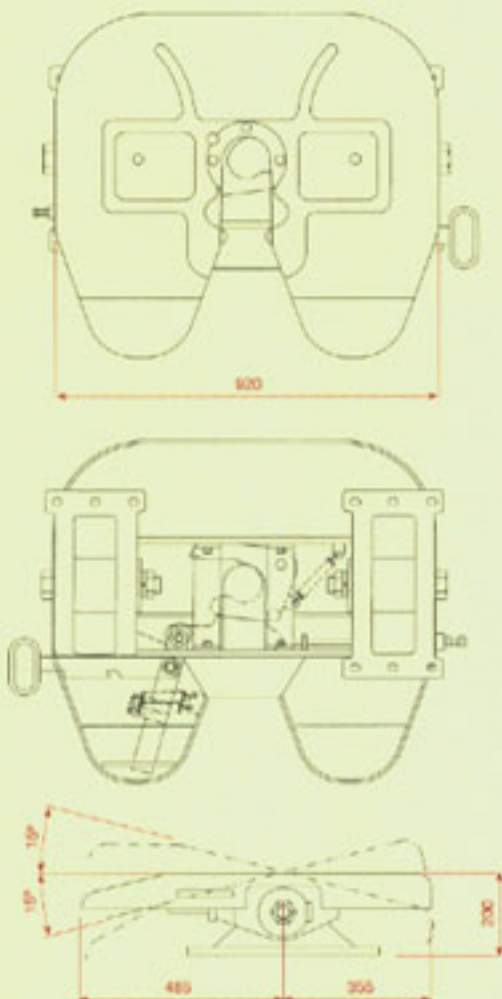
YORK
SIMPLY MILES AHEAD

YC50-SA Parts List



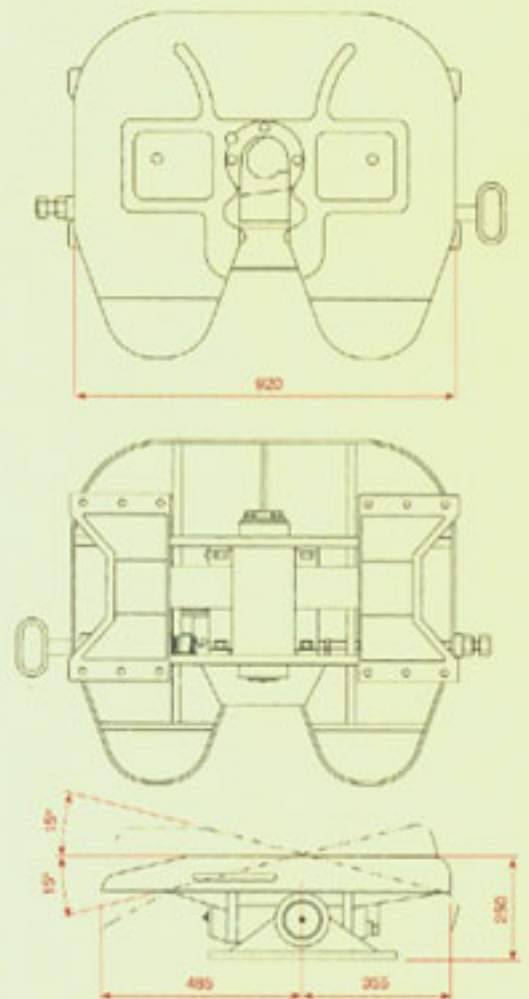
Item	Part No.	Description	Qty
1.	221101	Hook Bolt	1
2.	221102	Bolt (Wearing Ring)	3
3.	221103	Wearing Ring	1
4.	221104	M24 Castellated Nut	2
5.	221105	Mounting Foot	2
6.	221106	Pivot Bush	2
7.	221107	Pivot Pin	2
8.	221108	Pivot Bolt	2
9.	221109	Handle	1
10.	221110	Operating Lever Bolt	1
11.	221111	Operating Lever	1
12.	221112	Main Spring Connector	1
13.	221113	Plunger	1
14.	221114	Adjusting Rod	1
15.	221115	Hook	1
16.	221116	Top Plate Assembly	1
17.	221117	Pivot Pin Collar	2
18.	SB221118	Repair Kit	
19.	SB221119	Pivot Pin Repair Kit	

YC90-SA (3.5" Kingpin)

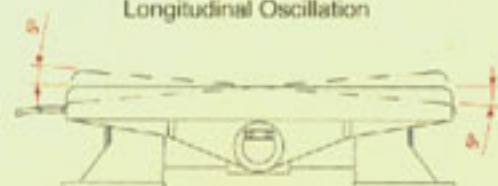


Longitudinal Oscillation
(Dimensions shown in mm)

YC90-DA (3.5" Kingpin) (Dual Oscillation)



Longitudinal Oscillation



Lateral Oscillation